

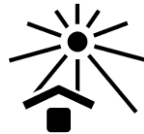
U1-RNP IgG ELISA

Instructions for Use

REF 1011FE00  12 x 8 determinations

IVD

CE



SBA
Part of **BBI** Solutions

Steffens Biotechnische Analysen GmbH
Bötzingen Straße 29 B
D - 79111 Freiburg
Tel.: +49 761 87003482
info-sba@bbisolutions.com

Content

1. Overview	2
1.1 Introduction and background	2
1.2 Intended Purpose	2
2. Warnings and precautions	3
3. Principle of the test	4
4. Contents of the kit	4
5. Materials required but not supplied.....	5
6. Storage of the kit	6
7. Reagent and sample preparation / specimen requirements.....	6
8. Assay procedure	6
8.1. Manual operation.....	6
8.2. Dynex DS2 automated ELISA system	7
9. Evaluation and quality control.....	8
10. Interpretation of results / limitations of the procedure	9
11. Performance characteristics	10
11.1. Standardisation	10
11.2. Analytical specificity.....	10
11.3. Detection limit (analytical sensitivity)	10
11.4. Homogeneity of the solid phase	10
11.5. Linearity.....	12
11.6. Precision	12
11.7. Frequency distribution of U1-RNP IgG.....	13
11.8. Manual operation vs. Dynex DS2 automated ELISA system.....	15
12. Declaration	16
13. Symbols	16
14. References.....	18
15. Summary flow chart.....	19

The product described here complies with the requirements of the IVD Directive 98/79/EC and transitional provisions of Article 110 of 2017/746 IVD Regulation.

1. Overview

1.1 Introduction and background

Uracil-rich, small nuclear RNAs (U-snRNA) are physiologically complexed with proteins to ribonucleoprotein particles (U-snRNP) which are involved in the splicing process of pre-mRNA. Different complexes (U1-U6) can be distinguished according to the participating RNA; their protein components are in part common, in part different. For example, U1-snRNA is complexed with the so-called Sm-proteins which are also present in other U-snRNPs, and with the U1-specific proteins A, C and 68kDa.

Autoantibodies directed against these three U1-specific proteins are considered as diagnostic marker for mixed connective tissue disease (MCTD; synonym: Sharp syndrome) (1, 2, 3). MCTD is a well defined overlap syndrome characterized by typical clinical manifestations, distinct autoantibodies and specific HLA constellation, i.e. DR2 and DR4 (4). U1-RNP specific antibodies are also associated with Systemic Lupus Erythematosus (SLE) but occur with distinctly lower prevalence (about 35%) and mostly in combination with further antinuclear autoantibodies (ANA) (4). Nowadays, proteins A, C and 68kDa are regarded as the actual RNP antigen, rather than the complete U1-RNP.

The present enzyme-linked immunosorbent assay (ELISA) is intended for the quantitative or qualitative determination of IgG antibodies directed against U1-RNP in human serum or plasma (cf. section 7). The antigen preparation is a balanced mixture of the human proteins A, C and 68kDa (thus avoiding the disturbing influence of Sm antigens); all of them recombinant and highly purified preparations. The test is fast (incubation time 30 – 30 – 30 minutes) and flexible (divisible solid phase, ready-to-use reagents). Six calibrators allow quantitative measurements; a negative and a positive control check the assay performance.

1.2 Intended Purpose

U1-RNP IgG ELISA is an enzyme-linked immunosorbent assay (ELISA) intended for the quantitative or qualitative determination of IgG class antibodies directed against U1-RNP complexes (proteins A, C, 68kDa) in human serum or plasma samples. Its function is the aid to diagnosis of mixed connective tissue disease (MCTD, Sharp syndrome) and related autoimmune diseases like systemic lupus erythematosus. This product is intended for manual or automated professional in vitro diagnostic use only.

2. Warnings and precautions

The test kit is intended for in vitro diagnostic use only; not for internal or external use in humans or animals. It must be executed by trained professional staff.

The kit has been tested for transport stability and can be shipped unrefrigerated for up to 3 days. Store at 2 - 8°C on arrival. In case of doubt, contact your local distributor or the manufacturer.

Do not use reagents beyond their expiration dates.

Adherence to the protocol is strongly recommended.

The sample buffer, calibrators and controls contain Na-azide as antimicrobial agent. The wash buffer contains bromonitrodioxane and the conjugate methylisothiazolone / bromonitrodioxane as preservative. The substrate contains 3, 3', 5, 5'-tetramethylbenzidine (TMB) and hydrogen peroxide (H₂O₂). The stop solution, 0,2 M sulfuric acid (H₂SO₄), is acidic and corrosive.

The above mentioned reagents may be toxic if ingested. Follow routine precautions for handling hazardous chemicals. Avoid all body contact, wear gloves and eye protection. If one of the reagents comes into contact with skin or mucous membrane, wash thoroughly with water. Never pipette by mouth. Dispose in a manner complying with local/national regulations.

Na-Azide may react with lead and copper plumbing to form explosive metal azides. On disposal, flush with a large amount of water to prevent azide build-up.

The calibrators and controls contain components of human origin. They were tested for human immunodeficiency virus (HIV)-Ag, hepatitis B surface (HBs)-Ag and antibodies against HIV 1/2 and hepatitis C virus (HCV) and showed negative results; either in an FDA-approved or a CE-compliant test, according to European Directive 98/79/EC.

However, no test can guarantee that material of human origin is not actually infectious. The preparations should therefore be treated as potentially infectious and disposed of accordingly, as should the samples (and residues thereof); according to CDC (Center of Disease Control, Atlanta, USA) or other local / national guidelines on laboratory safety and decontamination.

3. Principle of the test

The wells of the solid phase are coated with U1-RNP antigens, as described above. On this surface, the following immunological reactions take place:

1st reaction: U1-RNP-specific antibodies present in the sample bind to the immobilised antigen, forming the antigen-antibody complex. Then, non-bound sample components are washed away from the solid phase.

2nd reaction: A second antibody, directed at human IgG antibodies and conjugated with horse-radish peroxidase (HRP), is added. This conjugate binds to the complex. Then, excess conjugate is washed away from the solid phase.

3rd reaction: The enzyme-labelled complex converts a colourless substrate into a blue product. The degree of colour development reflects the concentration of U1-RNP IgG in the sample.

4. Contents of the kit

a. U1-RNP Coated Microwell Plate

1 microwell plate, coated with U1-RNP-specific antigens and hermetically packed in a foil laminate pouch together with a desiccant bag. The plate consists of 12 strips, each of which can be broken into 8 individual wells.

MWP	12x8
------------	-------------

b. Sample buffer

Sample buffer, 100 mL, ready-to-use, orange coloured. Contains Tris-buffered saline (TBS), bovine serum albumin (BSA), Tween and Na-azide.

BUF	SPL
------------	------------

c. Wash buffer

Wash buffer, 100 mL, 10x-concentrate, blue coloured. Contains TBS, Tween and bromonitrodioxane.

BUF	WASH	10x
------------	-------------	------------

d. U1-RNP IgG Calibrator 1-6

6 calibrators, 2,0 mL each, 0 - 0,60 - 2,0 - 6,0 - 20 and 60 U U1-RNP IgG / mL, ready-to-use, gradually blue coloured. Contain TBS, BSA, Tween and Na-azide.

CAL	1-6
------------	------------

e. U1-RNP IgG Negative and Positive Control

Negative and positive control, 2,0 mL each, ready-to-use, green and red coloured, respectively. Contain TBS, BSA, Tween and Na-azide.

CONTROL	-	CONTROL	+
----------------	----------	----------------	----------

f. U1-RNP IgG 14 mL Conjugate

Anti-human IgG HRP conjugate, 14 mL, ready-to-use, red coloured. Buffered solution containing stabilising protein, methylisothiazolone and bromonitrodioxane.

CONJ	IgG
-------------	------------

g. Substrate

Substrate solution, 14 mL, ready-to-use, colourless. Contains a buffered solution of TMB and H₂O₂. Contained in a vial impermeable to light.

SUBS	TMB
-------------	------------

h. Stop solution

Stop solution (0,2 M H₂SO₄), 14 mL, colourless, ready-to-use. Caution: sulfuric acid is corrosive.

SOLN	STOP
-------------	-------------

i. Instructions for Use

j. Lot-specific certificate of analysis

5. Materials required but not supplied

- a. Deionised or distilled water
- b. Graduated cylinder, 1000 mL
- c. Tubes for sample dilution (transfer tubes in the microwell plate format recommended)
- d. Pipettes for 10, 100 and 1000 µL (1- and 8-channel pipettes recommended)
- e. Microwell plate washer (optional)
- f. Microwell plate photometer fitted with a 450 nm filter
- g. ELISA evaluation program (recommended)

6. Storage of the kit

Store kit at 2 - 8°C, do not freeze. It is stable up to the expiry date stated on the label of the box. Do not use kit beyond its expiry date.

7. Reagent and sample preparation / specimen requirements

Do not exchange or pool corresponding components from different kits, due to possibly different shipping or storage conditions. If the kit is to be used for several tests, only the currently needed amount of reagents should be withdrawn. It is **crucially important** that no cross-contamination between the reagents occurs. Use only clean pipettes and do **not pour back** residues into the original flasks.

- a. The solid phase must reach room temperature before opening the pouch. Remove the supernumerary microwells from the frame and immediately put them back into the pouch, together with the desiccant bag. Reseal the pouch hermetically and keep it refrigerated for future use.
- b. Dilute the wash buffer 10x-concentrate (100 mL, blue) with 900 mL deionised water. Mix thoroughly. The diluted buffer is stable for several weeks if stored refrigerated (2 - 8°C).
- c. Preparation of the samples: handle patient specimens as potentially infectious agents. Besides serum, EDTA-, citrate- or heparin-treated plasma is suitable sample material as well.

Specimen requirements: highly lipemic, haemolysed or microbially contaminated samples may cause erroneous results and should be avoided.

Prepare samples using normal laboratory techniques. Turbid samples must first be clarified (centrifuged). The clarified or clear samples are mixed and then diluted 1/100, e.g. 10 µL serum or plasma + 990 µL sample buffer. Also mix the dilution.

For rapid dispensing during the assay procedure, preparation of the calibrators, controls and samples in microwell transfer tubes is recommended. This allows the operation of an 8-channel pipette during the assay procedure.

If samples are not assayed immediately, they should be stored at 2 - 8°C and assayed within 3 days. Repeated freezing and thawing of samples should be avoided. Thawed samples must be mixed prior to diluting.

8. Assay procedure

8.1. Manual operation

Before starting the assay, all components of the kit must have reached room temperature (23 ± 3°C).

To achieve best results, i.e. the maximum ratio between specific and background signal, **careful washing** is essential (steps a, c and e). It is **crucially important to remove the wash solution completely**. For that purpose, tap the plate firmly on several layers of absorbent tissue. Automated washers must be verified according to results obtained by manual washing.

- a. Immediately prior to use, wash the solid phase once: fill wells with 350 µL wash buffer each, let soak for about 10 seconds in the wells and remove.
- b. Dispense the calibrators (2,0 mL each, ready-to-use, gradually blue), controls (2,0 mL each, ready-to-use, green and red) and the diluted samples rapidly into the microwells; 100 µL per well. Duplicate measurements are recommended.

Incubate the plate for 30 minutes at room temperature ($23 \pm 3^{\circ}\text{C}$).

- c. Wash the wells 4 times as in step a.
- d. Rapidly (preferably using an 8-channel pipette) dispense the conjugate (14 mL, ready-to-use, red); 100 µL per well. Incubate the plate as in step b.
- e. Repeat wash step c.
- f. Rapidly (preferably using an 8-channel pipette) dispense the substrate solution (14 mL, ready-to-use, colourless, black vial); 100 µL per well. Incubate the plate as in step b. As the substrate is photosensitive, avoid intense light exposure (e.g. direct sunlight) during incubation.
- g. Rapidly (preferably using an 8-channel pipette) dispense the stop solution (14 mL, ready-to-use, colourless. Caution: corrosive!); 100 µL per well. Use the same sequence as for the substrate. The colour changes from blue to yellow. Agitate the plate, preferably on an orbital shaker, for about 10 seconds.

- h. Immediately read the absorbance in the microwell plate photometer at 450 nm.

Refrigerate the remainder of the reagents (2 - 8°C) if they are to be used again.

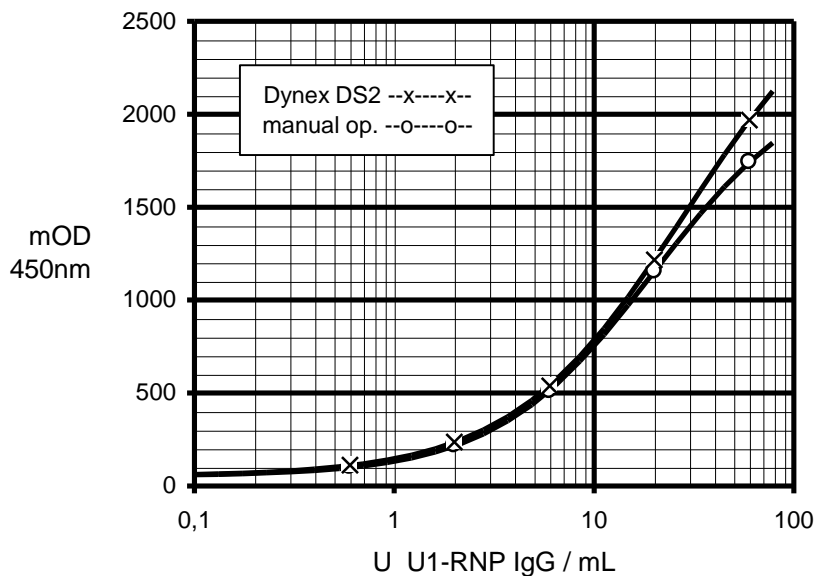
8.2. Dynex DS2 automated ELISA system

This product has been validated for use with the Dynex DS2 automated ELISA system. A description of the program flow for the assay execution and evaluation can be provided as a pdf file. The parameters of this program are merely a proposal and may need to be adapted by the operator to the requirements of the actual assay. In general terms, we have attempted to stick as close as possible to the protocol of manual operation, as above. However, due to the necessarily elevated temperature within the DS2, the substrate incubation period had to be shortened.

Section 11.8. gives a performance comparison between manual assay operation and the DS2 ELISA system.

9. Evaluation and quality control

Quantitative evaluation: the data obtained are quantitatively evaluated with the standard curve, as shown below. However, the depicted curve can only serve as a model. It can not substitute the measurement of the calibrators, together with the controls and actual samples. The curve has been constructed with a conventional ELISA evaluation program, using a 4-parameter function. The Spline approximation is also appropriate.



1011FE00.FED/StdKurveV2812J

If no computer-supported evaluation is possible, the standard curve may be drawn by hand. It allows transformation of the absorbance value of a sample into its concentration, i.e. into U U1-RNP IgG per mL sample.

Qualitative evaluation: the test may also be evaluated in a qualitative manner. This requires measurement of the positive control only. Nevertheless, measurement and examination of the negative control is recommended (see below: quality control).

In qualitative test evaluation, the absorbance of the samples is compared with the borderline absorbance (= cut-off). It is determined according to the following formula:

$$\text{absorbanceborderline} = \text{absorbancepositive control} \times \text{factor}$$

The factor depends on the kit lot and is quoted in the lot-specific certificate of analysis which is included with each test kit. Example:

$$\begin{aligned} \text{absorbancepositive control} &= 1250 \text{ mOD} \\ \text{factor} &= 0,35 \\ \text{absorbanceborderline} &= 1250 \text{ mOD} \times 0,35 = 438 \text{ mOD} \end{aligned}$$

In order to gain an impression of how positive a particular sample is for U1-RNP IgG, one may calculate the ratio, according to the formula:

$$\text{ratio} = \text{absorbance}_{\text{sample}} / \text{absorbance}_{\text{borderline}}$$

Example:

$$\begin{aligned} \text{absorbance}_{\text{borderline}} &= 438 \text{ mOD} \\ \text{absorbance}_{\text{sample}} &= 1480 \text{ mOD} \\ \text{ratio} &= 1480 \text{ mOD} / 438 \text{ mOD} = 3,4 \end{aligned}$$

Quality control: the positive and negative control check the assay performance. Their authorised values and acceptable ranges, respectively, are quoted in the lot-specific certificate of analysis. Values of the controls must fall within the indicated ranges; otherwise, the results of the assay are invalidated.

10. Interpretation of results / limitations of the procedure

Based on the measurement of a blood donor and a positive collective of sera (see below), we suggest for the assessment of patient sera:

	quantitative evaluation U U1-RNP IgG / mL sample	qualitative evaluation ratio
normal (negative) range	< 3,2	< 0,84
cut-off	4,0	1,00
equivocal range	3,2 - 5,0	0,84 - 1,20
positive range	> 5,0	> 1,20

These specifications are given as an indication only; in order to check their accuracy, each analysis should include parallel samples of normal sera.

A negative test result indicates that the patient does not have an elevated level of IgG antibodies to U1-RNP. Hence, MCTD is not very likely. Due to the relatively low sensitivity of the parameter regarding SLE, a negative anti-U1-RNP result cannot rule out this disease. It should be noted that in SLE patients the titer of IgG autoantibodies may decrease in response to B cell depleting therapy (5).

A positive result should be interpreted primarily as indication of MCTD. However, the test should be positive on at least two occasions, separated by several weeks. A suspicion of SLE is supported but should be verified by measurement of e.g. dsDNA and Sm autoantibodies.

Specimens exhibiting results within the borderline range quoted above should be considered as equivocal and reported as such. It is recommended that a second sample be collected two weeks later and run in parallel with the first sample to document a possible change of antibody titer.

As with any serological test, the results should be interpreted in the light of the patient's symptoms and other diagnostic criteria.

11. Performance characteristics

11.1. Standardisation

The test is standardised with a purified serum preparation containing IgG antibodies specifically directed at U1-RNP. This preparation is calibrated against a set of gradually positive sera, solely reserved for this purpose. The degree of sample reactivity is measured in arbitrary units (U/mL) since no international standard is available.

11.2. Analytical specificity

The test allows the specific determination of human IgG antibodies directed against U1-RNP. It has been validated (among other parameters) by means of the commercially available human reference sera of the "Center of Disease Control" (CDC, Atlanta, USA). The following results are typical:

serum	1	2	3	4	5	6	7	8	9	10
CDC- result	ds- DNA	SS-B /La	--	U1- RNP	Sm	--	SS-A /Ro	--	Scl- 70	Jo- 1
immune- fluorescence	homo- gen/ rim	speck- led	speck- led	--	--	nuc- leolar	--	centro- mere	--	--
ELISA (U/mL)	2,6	0,6	>60	40	57	3,2	0,9	0,6	0,8	0,6

Interference with anticoagulants (EDTA, Citrat, Heparin) in samples has been tested and no interference effects have been observed.

11.3. Detection limit (analytical sensitivity)

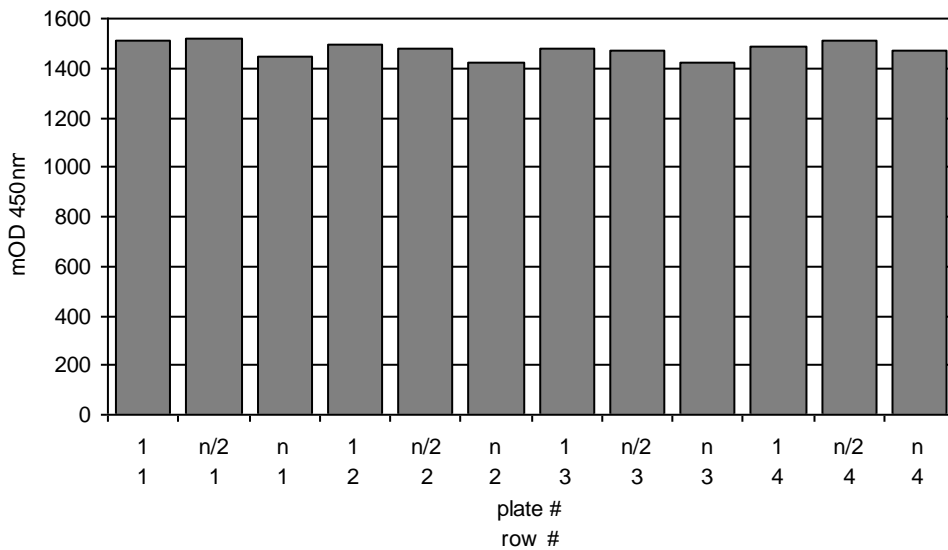
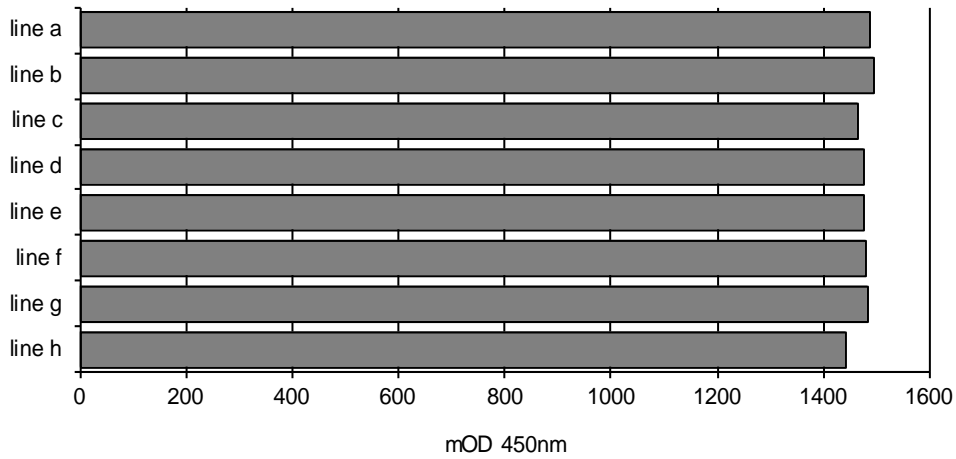
The detection limit is defined as that concentration of analyte that corresponds to the mean absorbance of sample buffer plus 3-fold standard deviation (s). It was determined as < 0,5 U U1-RNP IgG per mL sample (n = 24).

Recommended measuring range: 0,5 - 60 U U1-RNP IgG per mL sample

11.4. Homogeneity of the solid phase

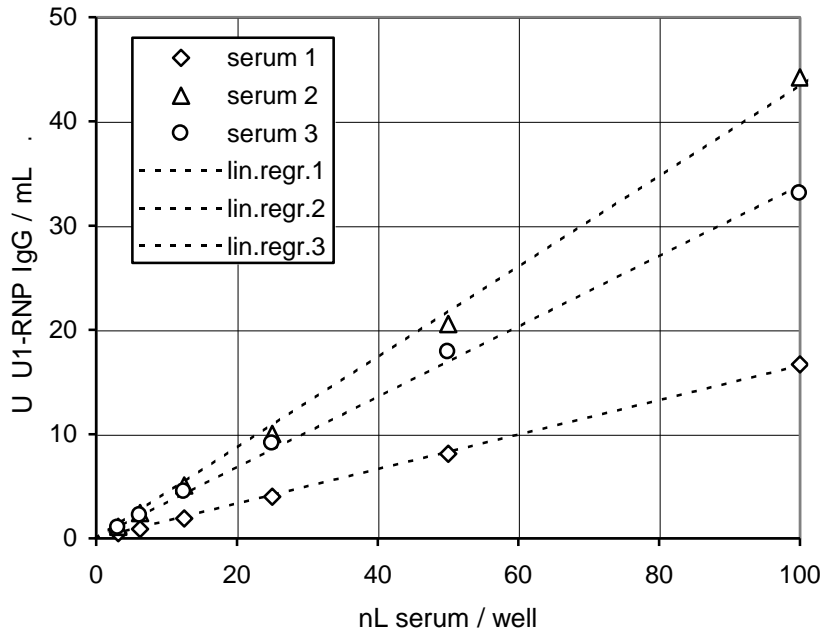
Measurement of the solid phase homogeneity is a regular QC part of each production lot. This is determined by 288-fold measurement of a positive but non-saturating sample on 3 selected plates. Acceptance criterion: mOD-coefficient of variation (cv) over the plates < 8%. The figure below shows a representative excerpt (solid phase lot no. 1710P) of such an analysis.

plate row	1 1	n/2 1	n 1	1 2	n/2 2	n 2	1 3	n/2 3	n 3	1 4	n/2 4	n 4	mean	cv %
line a	1501	1521	1457	1503	1482	1449	1472	1487	1424	1495	1526	1520	1486	2,1
line b	1555	1555	1450	1528	1503	1425	1468	1496	1425	1523	1521	1497	1496	3,0
line c	1483	1514	1437	1502	1483	1412	1460	1463	1398	1507	1505	1441	1467	2,6
line d	1509	1504	1443	1505	1482	1425	1479	1484	1431	1475	1519	1474	1478	2,1
line e	1513	1520	1419	1446	1487	1427	1502	1474	1441	1484	1521	1485	1477	2,4
line f	1546	1508	1444	1514	1476	1417	1488	1485	1408	1489	1537	1464	1481	2,9
line g	1531	1530	1475	1485	1482	1438	1485	1471	1426	1491	1511	1477	1484	2,1
line h	1481	1473	1455	1453	1443	1395	1444	1416	1402	1434	1464	1438	1442	1,9
mean	1515	1516	1448	1492	1480	1424	1475	1472	1419	1487	1513	1475	1476	
cv %	1,8	1,5	1,1	1,9	1,1	1,1	1,2	1,7	1,1	1,7	1,5	1,9		2,6



11.5. Linearity

In order to assess the dose-response relationship of the test, positive sera were measured in serial 2-fold dilution. Acceptance criterion: linear regression of 4 successive dilutions must yield a correlation factor > 0,98. A typical result is depicted below.



1011FE00.FED/LinearV2812J

11.6. Precision

For the assessment of the test precision, the variability of results under the following conditions was determined: a. within 1 assay and between 3 assays, b. between 3 operators and c. between 2 kit lots.

a. Intra- and inter-assay variability (n = 24 and 72, respectively)

sample	mean U/mL	variability (cv, %)	
		intra-assay	inter-assay
1	6,0	2,3	2,5
2	13,4	3,9	4,7
3	29,5	3,2	3,4

b. Operator to operator variability (n = 12)

sample	mean U/mL	variability (cv, %)
1	5,9	1,5
2	13,4	3,7
3	28,6	3,0

c. Variability between 2 kit lots (n = 6)

sample	mean U/mL	variability (cv, %)
1	6,3	1,9
2	13,3	7,5
3	25,4	3,0

11.7. Frequency distribution of U1-RNP IgG

This was analysed in a sera collective of blood donors, equally distributed by sex and age, and a collective of sera found positive for U1-RNP autoantibodies according to a CE-compliant reference ELISA or that were clinically defined. The following distribution of the analyte was observed:

blood donor sera

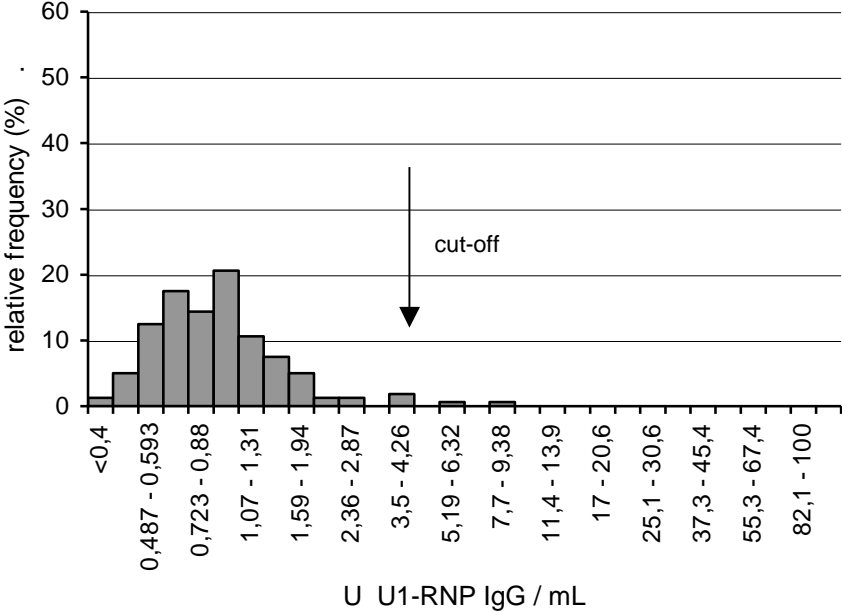
n: 160
 mean: 1,1 U/mL
 mean + s: 1,9 U/mL
 mean + 2s: 2,8 U/mL
 median: 0,9 U/mL
 95th percentile: 2,1 U/mL

positive sera

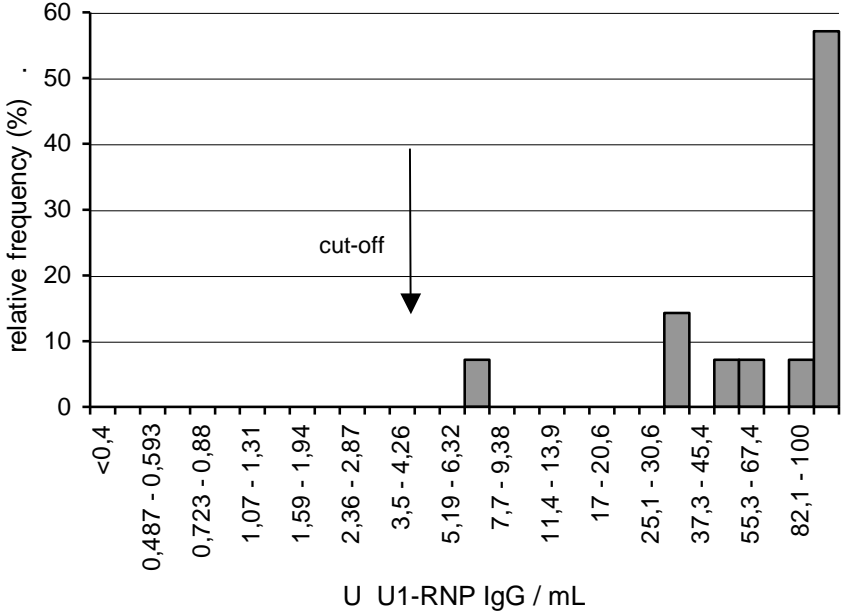
n: 14
 mean: 237,7 U/mL
 mean - s: < 0 U/mL
 mean - 2s: < 0 U/mL
 median: 165,0 U/mL
 5th percentile: 24,5 U/mL

ROC-analysis of these data was used to determine the cut-off as 4,0 U/mL (6). The data presented here suggest a diagnostic specificity and sensitivity of the ELISA of about 99 and 100 %, respectively. These values apply for the measured sera only; other collectives may yield different results. In view of the low number of positive sera, particular caution is required when interpreting test sensitivity.

blood donor sera



positive sera



1011FE00.FEDHäufigPlotV2810J

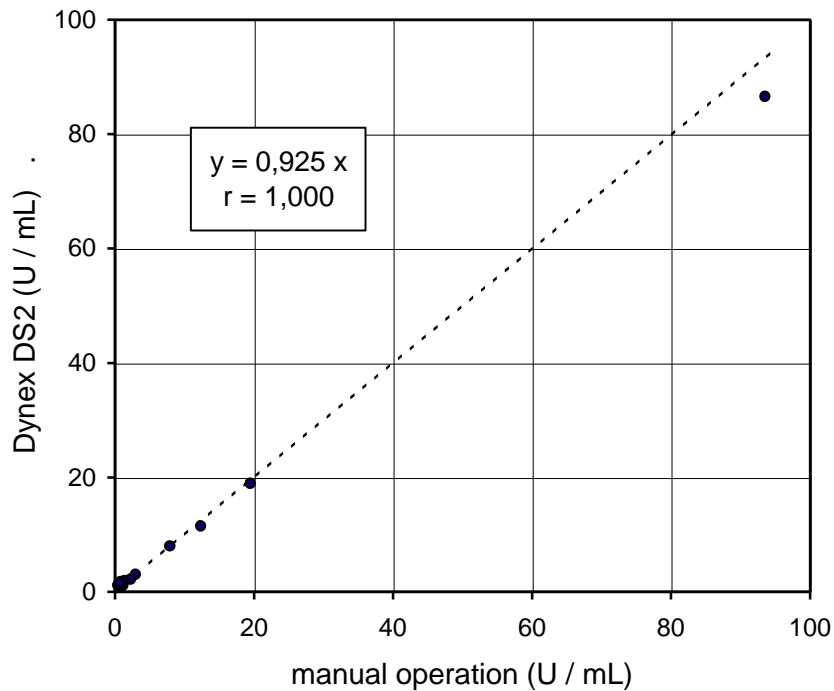
11.8. Manual operation vs. Dynex DS2 automated ELISA system

Variability: Using specimen of one and the same kit lot, the variability of assay results were compared between manual operation and the Dynex DS2 automated ELISA system:

	manual operation	Dynex DS2
intra-assay variability (n = 16)	mean cv = 3,8 %	mean cv = 5,3 %
inter-assay variability (n = 48)	mean cv = 5,5 %	mean cv = 6,6 %

Standard curve: depicted in section 9

Correlation:



1011FE00.FED/KorrDynexDS2-V2812J

12. Declaration

Steffens Biotechnische Analysen GmbH (SBA) guarantees that the product delivered has been thoroughly tested to ensure that its properties specified herein are fulfilled. No further warranties are given.

The performance data presented here were obtained using the procedure indicated. Any modification in the procedure may affect the results in which case SBA disclaims all warranties whether expressed, implied or statutory. Moreover, SBA accepts no liability for any damage, whether direct, indirect or consequential, which results from inappropriate use or storage of the product.

13. Symbols



Catalogue number



Batch code



Unique Device Identification



Contains sufficient for <n> tests



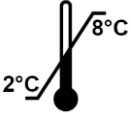
In Vitro diagnostic medical device



Conformité Européenne



Keep away from sunlight



Store at 2 - 8°C



Use-by Date



Consult "Instructions for Use"



Caution



Biological risk



Manufacturer



Distributor

14. References

1. Lerner, M. R., Steitz, J. A.: Antibodies to small nuclear RNAs complexed with proteins are produced by patients with systemic lupus erythematosus. *Proc Natl Acad Sci USA* 76 (1979), 5495 - 5499
2. Francoeur, A. M.: Anti-Sm and anti-U1-RNP lupus antibody fine specificities. *J Clin Immunol* 9 (1989), 256 - 263
3. Combe, B., et al.: Clinical significance of anti-RNP and anti-Sm autoantibodies as determined by immunoblotting and immunoprecipitation in sera from patients with connective tissue diseases. *Clin Exp Immunol* 75 (1989), 18 - 24
4. Messinger, M.: Autoantikörper bei systemischen entzündlich-rheumatischen Erkrankungen (Kollagenosen). In: L. Thomas (ed.): *Labor und Diagnose* (2005), TH-Books-Verlags-Gesellschaft, Frankfurt/Main, 1139 - 1161
5. Persson, B., et al.: Disappearance and Reappearance of IgG, IgA and IgM Autoantibody Isotypes and Immune Complexes in Rituximab-Treated SLE Patients. *Annals of the Rheumatic Diseases* 72 (2013), A34
6. Sommer, R., and Eitelberger, F.: Wertigkeit der Gliadin-Antikörper im Serum zur Diagnose der Zöliakie. *Wien Klin Wochenschr* 104/4 (1992), 86 - 92

15. Summary flow chart

- a. Dilute the samples 1/100 in sample buffer (100 mL, ready-to-use, orange) and mix.
- b. Dilute the wash buffer 10x-concentrate (100 mL, blue) with water and mix.
- c. Wash the wells once with 350 μ L wash buffer each. Dispense 100 μ L of the calibrators (2,0 mL each, ready-to-use, gradually blue) and controls (2,0 mL each, ready-to-use, green and red) and of the diluted samples into the wells of the solid phase. Duplicate measurements are recommended. Incubate for 30 minutes at room temperature ($23 \pm 3^{\circ}\text{C}$).
- d. Wash the wells 4 times with 350 μ L wash buffer each.
- e. Dispense 100 μ L of the conjugate (14 mL, ready-to-use, red) into the wells. Incubate as in step c.
- f. Repeat washing step d.
- g. Dispense 100 μ L of the substrate solution (14 mL, ready-to-use, black vial) per well. Incubate as in step c. Then, add 100 μ L stop solution (14 mL, ready-to-use, colourless) per well and agitate the plate briefly.
- h. Immediately measure the absorbance at 450 nm.
- i. Quantitative evaluation: determine the standard curve and, using this curve, transform the absorbance of the samples into their respective antibody concentration (U/mL).
- j. Qualitative evaluation: determine the borderline absorbance by multiplying the absorbance of the positive control with the factor shown in the certificate of analysis. Then, calculate the ratio of the samples by dividing their absorbance by the borderline absorbance.