


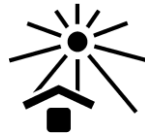
# H. pylori IgA ELISA

## Instructions for Use

**REF** 0212FE00  12 x 8 determinations

**IVD**

**CE**



**SBA**  
Part of **BBI** Solutions

Steffens Biotechnische Analysen GmbH  
Bötzingen Straße 29 B  
D - 79111 Freiburg  
Tel.: +49 761 87003482  
info-sba@bbisolutions.com

## Contents

1. Overview .....	2
1.1 Introduction and background .....	2
1.2 Intended Purpose .....	2
2. Warnings and precautions .....	2
3. Principle of the test .....	3
4. Contents of the kit .....	4
5. Materials required but not supplied .....	5
6. Storage of the kit .....	5
7. Reagent and sample preparation / specimen requirements .....	6
8. Assay procedure .....	6
8.1. Manual operation .....	6
8.2. Dynex DS2 automated ELISA system .....	7
9. Evaluation and quality control .....	8
10. Interpretation of results / limitations of the procedure .....	9
11. Performance characteristics .....	10
11.1. Standardisation .....	10
11.2. Analytical specificity .....	10
11.3. Detection limit (analytical sensitivity) .....	10
11.4. Homogeneity of the solid phase .....	10
11.5. Linearity .....	12
11.6. Precision .....	12
11.7. Frequency distribution of H. pylori IgA .....	13
11.8. Manual operation vs. Dynex DS2 automated ELISA system .....	15
12. Declaration .....	16
13. Symbols .....	16
14. References .....	18
15. Summary flow chart .....	19

The product described here complies with the requirements of the IVD Directive 98/79/EC and transitional provisions of Article 110 of 2017/746 IVD Regulation.

## 1. Overview

### 1.1 Introduction and background

*Helicobacter pylori* (*H. pylori*) is a gram-negative bacterium which infects gastric mucosa (1). This infection is associated with various gastroduodenal diseases like active chronic gastritis and gastric and duodenal ulcers (2). In addition, evidence has been accumulated that *H. pylori* infection increases the risk of gastric carcinoma (3). Serological testing for *H. pylori* antibodies is a well-established method for the diagnosis of this infection (4). Several antimicrobial regimens (antibiotics combined with bismuth) have been successfully used to eradicate the bacterium.

The present enzyme-linked immuno sorbent assay (ELISA) is intended for the determination of IgA antibodies directed against *H. pylori* in human serum or plasma (cf. section 7). It may be used qualitatively for pre-endoscopy screening or quantitatively. The immobilised antigen is a purified extract from *H. pylori* ATCC-strain 43504, consisting of specific, native cell surface antigens, including the key antigen urease. Further, the preparation contains the Cag-A protein, coded by the cytotoxin-associated gene A, which is expressed only by the virulent strains of *H. pylori*.

The test is fast (incubation time 30 / 30 / 30 minutes) and flexible (divisible solid phase, ready-to-use reagents). Six calibrators allow quantitative measurements; a negative and a positive control check the assay performance.

### 1.2 Intended Purpose

*H. pylori* IgA ELISA is an enzyme-linked immunosorbent assay (ELISA) intended for the quantitative or qualitative determination of IgA class antibodies directed against *Helicobacter pylori* in human serum or plasma samples.

Its function is the aid to diagnosis of *Helicobacter pylori* infection.

This product is intended for manual or automated professional *in vitro* diagnostic use only.

## 2. Warnings and precautions

The test kit is intended for in vitro diagnostic use only; not for internal or external use in humans or animals. It must be executed by trained professional staff.

The kit has been tested for transport stability and can be shipped unrefrigerated for up to 3 days. Store at 2 - 8°C on arrival. In case of doubt, contact your local distributor or the manufacturer.

Do not use reagents beyond their expiration dates.

Adherence to the protocol is strongly recommended.

The sample buffer, calibrators and controls contain Na-azide as antimicrobial agent. The wash buffer contains bromonitrodioxane and the conjugate methylisothiazolone / bromonitrodioxane as preservative. The substrate contains 3, 3', 5, 5'-tetramethylbenzidine (TMB) and hydrogen peroxide (H<sub>2</sub>O<sub>2</sub>). The stop solution, 0,2 M sulfuric acid (H<sub>2</sub>SO<sub>4</sub>), is acidic and corrosive.

The above mentioned reagents may be toxic if ingested. Follow routine precautions for handling hazardous chemicals. Avoid all body contact, wear gloves and eye protection. If one of the reagents comes into contact with skin or mucous membrane, wash thoroughly with water. Never pipette by mouth. Dispose in a manner complying with local/national regulations.

Na-Azide may react with lead and copper plumbing to form explosive metal azides. On disposal, flush with a large amount of water to prevent azide build-up.

The calibrators and controls contain components of human origin. They were tested for human immunodeficiency virus (HIV)-Ag, hepatitis B surface (HBs)-Ag and antibodies against HIV 1/2 and hepatitis C virus (HCV) and showed negative results; either in an FDA-approved or a CE-compliant test, according to European Directive 98/79/EC.

However, no test can guarantee that material of human origin is not actually infectious. The preparations should therefore be treated as potentially infectious and disposed of accordingly, as should the samples (and residues thereof); according to CDC (Center of Disease Control, Atlanta, USA) or other local / national guidelines on laboratory safety and decontamination.

### **3. Principle of the test**

The wells of the solid phase are coated with selected H. pylori antigens. On this surface, the following immunological reactions take place:

1<sup>st</sup> reaction: H. pylori-specific antibodies present in the sample bind to the immobilised antigen, forming the antigen-antibody complex. Then, non-bound sample components are washed away from the solid phase.

2<sup>nd</sup> reaction: A second antibody, directed at human IgA antibodies and conjugated with horse-radish peroxidase (HRP), is added. This conjugate binds to the complex. Then, excess conjugate is washed away from the solid phase.

3<sup>rd</sup> reaction: The enzyme-labelled complex converts a colourless substrate into a blue product. The degree of colour development reflects the concentration of IgA antibodies against H. pylori in the sample.

#### 4. Contents of the kit

##### a. *H. pylori* Coated Microwell Plate

1 microwell plate, coated with selected *H. pylori* antigens and hermetically packed in a foil laminate pouch together with a desiccant bag. The plate consists of 12 strips, each of which can be broken into 8 individual wells.

<b>MWP</b>	<b>12x8</b>
------------	-------------

##### b. Sample buffer

Sample buffer, 100 mL, ready-to-use, orange coloured. Contains Tris-buffered saline (TBS), bovine serum albumin (BSA), Tween and Na-azide.

<b>BUF</b>	<b>SPL</b>
------------	------------

##### c. Wash buffer

Wash buffer, 100 mL, 10x-concentrate, blue coloured. Contains TBS, Tween and bromonitrodioxane.

<b>BUF</b>	<b>WASH</b>	<b>10x</b>
------------	-------------	------------

##### d. *H. pylori* IgA Calibrator 1-6

6 calibrators, 2,0 mL each, 0 - 3,0 - 10 - 30 - 100 and 300 U *H. pylori* IgA / mL, ready-to-use, gradually blue coloured. Contain TBS, BSA, Tween and Na-azide.

<b>CAL</b>	<b>1-6</b>
------------	------------

##### e. *H. pylori* IgA Negative and Positive Control

Negative and positive control, 2,0 mL each, ready-to-use, green and red coloured, respectively. Contain TBS, BSA, Tween and Na-azide.

<b>CONTROL</b>	<b>-</b>	<b>CONTROL</b>	<b>+</b>
----------------	----------	----------------	----------

##### f. *H. pylori* IgA 14 mL Conjugate

Anti-human IgA HRP conjugate, 14 mL, ready-to-use, yellow coloured. Buffered solution containing stabilising protein, methylisothiazolone and bromonitrodioxane.

<b>CONJ</b>	<b>IgA</b>
-------------	------------

##### g. Substrate

Substrate solution, 14 mL, ready-to-use, colourless. Contains a buffered solution of TMB and H<sub>2</sub>O<sub>2</sub>. Contained in a vial impermeable to light.

<b>SUBS</b>	<b>TMB</b>
-------------	------------

**h. Stop solution**

Stop solution (0,2 M H<sub>2</sub>SO<sub>4</sub>), 14 mL, colourless, ready-to-use. Caution: sulfuric acid is corrosive.

<b>SOLN</b>	<b>STOP</b>
-------------	-------------

**i. Directions for use**

**j. Lot-specific certificate of analysis**

**5. Materials required but not supplied**

- a. Deionised or distilled water
- b. Graduated cylinder, 1000 mL
- c. Tubes for sample dilution (transfer tubes in the microwell plate format recommended)
- d. Pipettes for 10, 100 and 1000 µL (1- and 8-channel pipettes recommended)
- e. Microwell plate washer (optional)
- f. Microwell plate photometer fitted with a 450 nm filter
- g. ELISA evaluation program (recommended)

**6. Storage of the kit**

Store kit at 2 - 8°C, do not freeze. It is stable up to the expiry date stated on the label of the box. Do not use kit beyond its expiry date.

## 7. Reagent and sample preparation / specimen requirements

Do not exchange or pool corresponding components from different kits, due to possibly different shipping or storage conditions. If the kit is to be used for several tests, only the currently needed amount of reagents should be withdrawn. It is **crucially important** that no cross-contamination between the reagents occurs. Use only clean pipettes and do **not pour back** residues into the original flasks.

- a. The solid phase must reach room temperature before opening the pouch. Remove the supernumerary microwells from the frame and immediately put them back into the pouch, together with the desiccant bag. Reseal the pouch hermetically and keep it refrigerated for future use.
- b. Dilute the wash buffer 10x-concentrate (100 mL, blue) with 900 mL deionised water. Mix thoroughly. The diluted buffer is stable for several weeks if stored refrigerated (2 - 8°C).
- c. Preparation of the samples: handle patient specimens as potentially infectious agents. Besides serum, EDTA-, citrate- or heparin-treated plasma is suitable sample material as well.

Specimen requirements: highly lipemic, haemolysed or microbially contaminated samples may cause erroneous results and should be avoided.

Prepare samples using normal laboratory techniques. Turbid samples must first be clarified (centrifuged). The clarified or clear samples are mixed and then diluted 1/100, e.g. 10 µL serum or plasma + 990 µL sample buffer. Also mix the dilution.

For rapid dispensing during the assay procedure, preparation of the calibrators, controls and samples in microwell transfer tubes is recommended. This allows the operation of an 8-channel pipette during the assay procedure.

If samples are not assayed immediately, they should be stored at 2 - 8°C and assayed within 3 days. Repeated freezing and thawing of samples should be avoided. Thawed samples must be mixed prior to diluting.

## 8. Assay procedure

### 8.1. Manual operation

Before starting the assay, all components of the kit must have reached room temperature (23 ± 3°C).

To achieve best results, i.e. the maximum ratio between specific and background signal, **careful washing** is essential (steps a, c and e). It is **crucially important to remove the wash solution completely**. For that purpose, tap the plate firmly on

several layers of absorbent tissue. Automated washers must be verified according to results obtained by manual washing.

- a. Immediately prior to use, wash the solid phase once: fill wells with 350 µL wash buffer each, let soak for about 10 seconds in the wells and remove.
- b. Dispense the calibrators (2,0 mL each, ready-to-use, gradually blue), controls (2,0 mL each, ready-to-use, green and red) and the diluted samples rapidly into the microwells; 100 µL per well. Duplicate measurements are recommended.

Incubate the plate for 30 minutes at room temperature ( $23 \pm 3^{\circ}\text{C}$ ).

- c. Wash the wells 4 times as in step a.
- d. Rapidly (preferably using an 8-channel pipette) dispense the conjugate (14 mL, ready-to-use, yellow); 100 µL per well. Incubate the plate as in step b.
- e. Repeat wash step c.
- f. Rapidly (preferably using an 8-channel pipette) dispense the substrate solution (14 mL, ready-to-use, colourless, black vial); 100 µL per well. Incubate the plate as in step b. As the substrate is photosensitive, avoid intense light exposure (e.g. direct sunlight) during incubation.
- g. Rapidly (preferably using an 8-channel pipette) dispense the stop solution (14 mL, ready-to-use, colourless. Caution: corrosive!); 100 µL per well. Use the same sequence as for the substrate. The colour changes from blue to yellow. Agitate the plate, preferably on an orbital shaker, for about 10 seconds.
- h. Immediately read the absorbance in the microwell plate photometer at 450 nm.

Refrigerate the remainder of the reagents (2 - 8°C) if they are to be used again.

## **8.2. Dynex DS2 automated ELISA system**

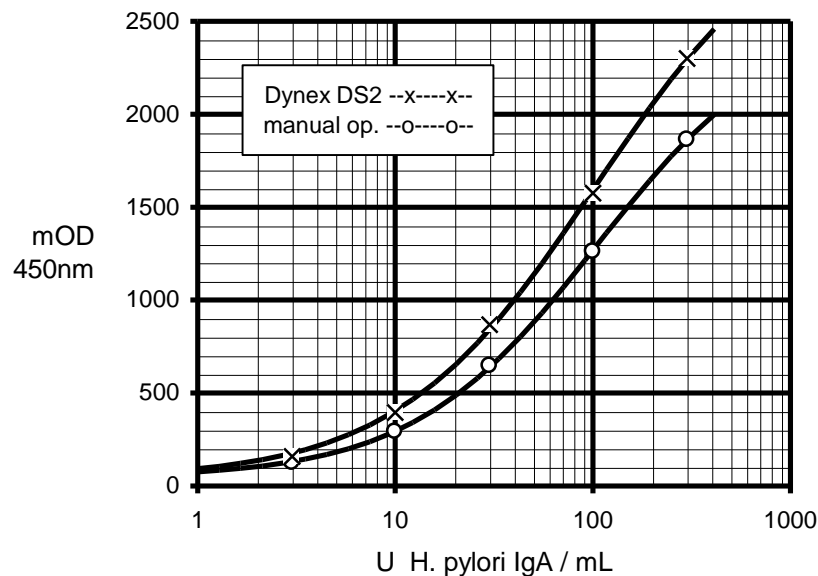
This product has been validated for use with the Dynex DS2 automated ELISA system. A description of the program flow for the assay execution and evaluation can be provided as a pdf file. The parameters of this program are merely a proposal and may need to be adapted by the operator to the requirements of the actual assay. In general terms, we have attempted to stick as close as possible to the protocol of manual operation, as above. However, due to the necessarily elevated temperature within the DS2, the substrate incubation period had to be shortened.

Section 11.8. gives a performance comparison between manual assay operation and the DS2 ELISA system.



## 9. Evaluation and quality control

Quantitative evaluation: the data obtained are quantitatively evaluated with the standard curve, as shown below. However, the depicted curve can only serve as a model. It can not substitute the measurement of the calibrators, together with the controls and actual samples. The curve has been constructed with a conventional ELISA evaluation program, using a 4-parameter function. The Spline approximation is also appropriate.



0212FE00.FED/StdKurveV2012J

If no computer-supported evaluation is possible, the standard curve may be drawn by hand. It allows transformation of the absorbance value of a sample into its concentration, i.e. into U H. pylori IgA per mL sample.

Qualitative evaluation: the test may also be evaluated in a qualitative manner. This requires measurement of the positive control only. Nevertheless, measurement and examination of the negative control is recommended (see below: quality control).

In qualitative test evaluation, the absorbance of the samples is compared with the borderline absorbance (= cut-off). It is determined according to the following formula:

$$\text{absorbance}_{\text{borderline}} = \text{absorbance}_{\text{positive control}} \times \text{factor}$$

The factor depends on the kit lot and is quoted in the lot-specific certificate of analysis which is included with each test kit. Example:

$$\begin{aligned} \text{absorbance}_{\text{positive control}} &= 1250 \text{ mOD} \\ \text{factor} &= 0,35 \\ \text{absorbance}_{\text{borderline}} &= 1250 \text{ mOD} \times 0,35 = 438 \text{ mOD} \end{aligned}$$

In order to gain an impression of how positive a particular sample is for H. pylori IgA, one may calculate the ratio, according to the formula:

$$\text{ratio} = \text{absorbance}_{\text{sample}} / \text{absorbance}_{\text{borderline}}$$

Example:

$$\begin{aligned} \text{absorbance}_{\text{borderline}} &= 438 \text{ mOD} \\ \text{absorbance}_{\text{sample}} &= 1480 \text{ mOD} \\ \text{ratio} &= 1480 \text{ mOD} / 438 \text{ mOD} = 3,4 \end{aligned}$$

Quality control: the positive and negative control check the assay performance. Their authorised values and acceptable ranges, respectively, are quoted in the lot-specific certificate of analysis. Values of the controls must fall within the indicated ranges; otherwise, the results of the assay are invalidated.

## 10. Interpretation of results / limitations of the procedure

Based on the measurement of a blood donor and a positive collective of sera (see below), we suggest for the assessment of patient sera:

	quantitative evaluation U H. pylori IgA / mL sample	qualitative evaluation ratio
normal (negative) range	< 7,9	< 0,79
cut-off	11,0	1,00
equivocal range	7,9 - 15,4	0,79 - 1,27
positive range	> 15,4	> 1,27

These specifications are given as an indication only; in order to check their accuracy, each analysis should include parallel samples of normal sera.

A negative test result indicates that the patient does not have an elevated level of IgA antibodies to H. pylori. It does not preclude the possibility of a recent infection. If clinical signs are observed, IgM or IgG antibodies directed at H. pylori may be determined.

A positive result may be considered as an indication for a H. pylori infection and a plausible explanation for a gastrointestinal disorder, as outlined in the beginning. The present serological test is a marker of exposure to H. pylori but does not necessarily indicate an ongoing infection.

Specimens exhibiting results within the borderline range quoted above should be considered as equivocal and reported as such. It is recommended that a second

sample be collected two weeks later and run in parallel with the first sample to document a possible change of antibody titer.

As with any serological test, the results should be interpreted in the light of the patient's symptoms and other diagnostic criteria. Another non-invasive and complementary technique is the urea breath test, which can indicate an active infection. In addition, invasive techniques (endoscopy, biopsy, histological examinations) are available. The choice of appropriate test depends on the pre-test probability of infection, the characteristics of the test being used and its cost-effectiveness (5).

## **11. Performance characteristics**

### **11.1. Standardisation**

The test is standardised with a purified serum preparation containing IgA antibodies specifically directed at *H. pylori*. This preparation is calibrated against a set of gradually positive sera, solely reserved for this purpose. The degree of sample reactivity is measured in arbitrary units (U/mL) since no international standard is available.

### **11.2. Analytical specificity**

The test allows the specific determination of human IgA antibodies directed against *H. pylori*.

Interference with anticoagulants (EDTA, Citrat, Heparin) in samples has been tested and no interference effects have been observed.

### **11.3. Detection limit (analytical sensitivity)**

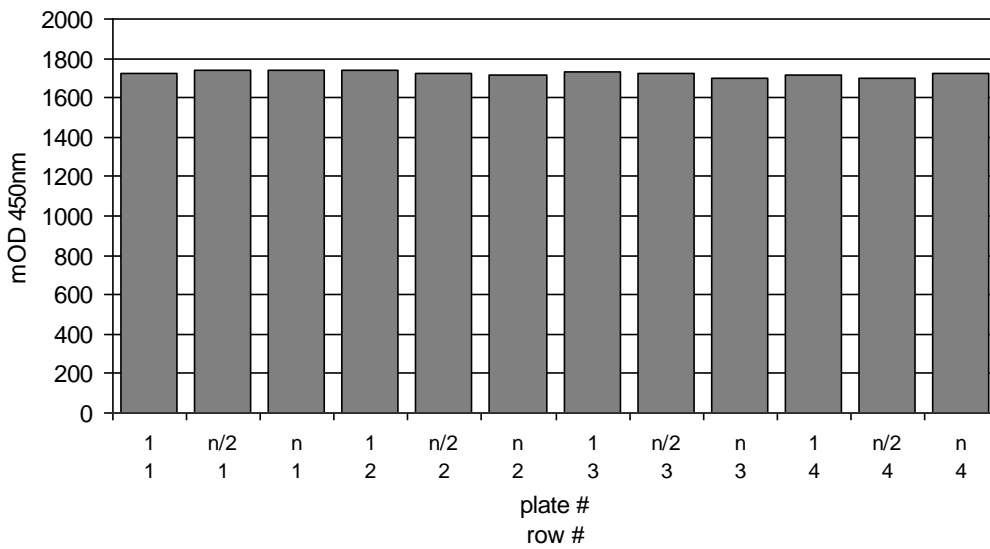
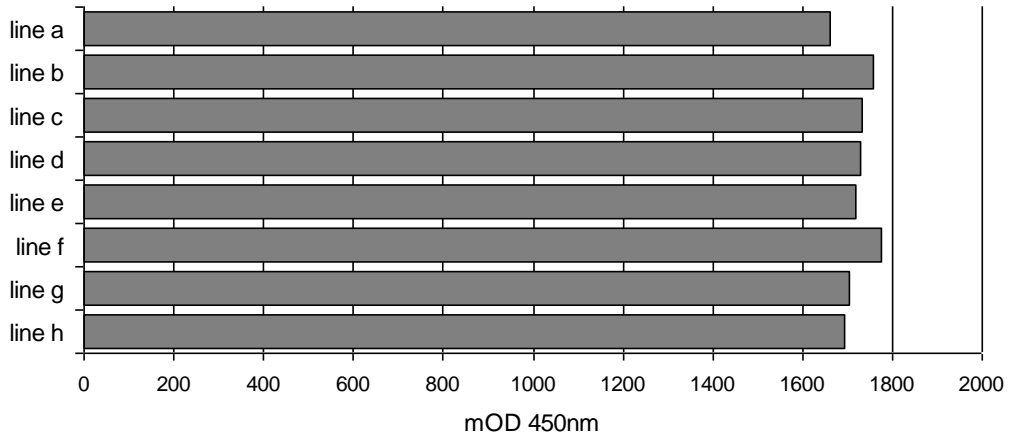
The detection limit is defined as that concentration of analyte that corresponds to the mean absorbance of sample buffer plus 3-fold standard deviation (s). It was determined as < 1 U *H. pylori* IgA per mL sample (n = 24).

Recommended measuring range: 2 - 200 U *H. pylori* IgA per mL sample

### **11.4. Homogeneity of the solid phase**

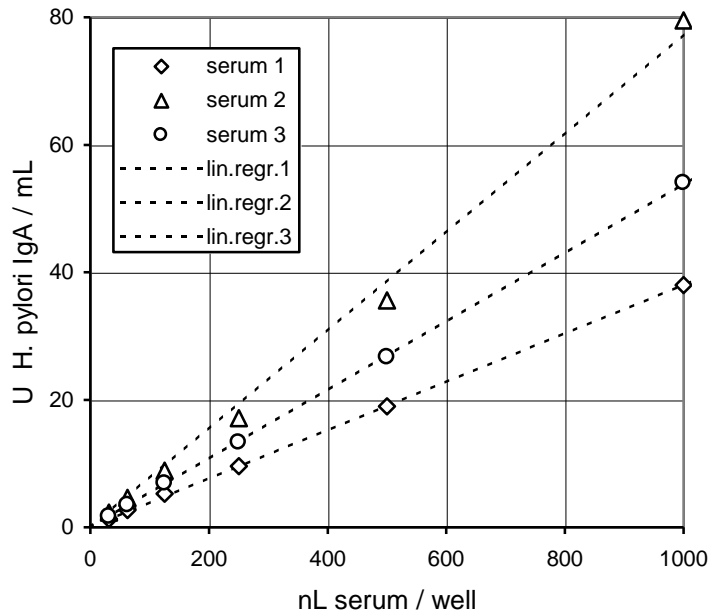
Measurement of the solid phase homogeneity is a regular QC part of each production lot. This is determined by 288-fold measurement of an IgG-positive but non-saturating sample on 3 selected plates. Acceptance criterion: mOD-coefficient of variation (cv) over the plates < 8%. The figure below shows a representative excerpt (solid phase lot no. 2008R) of such an analysis.

plate row	1 1	n/2 1	n 1	1 2	n/2 2	n 2	1 3	n/2 3	n 3	1 4	n/2 4	n 4	mean	cv %
line a	1659	1697	1693	1695	1686	1647	1658	1634	1638	1615	1642	1687	1663	1,7
line b	1751	1781	1759	1755	1741	1785	1764	1773	1748	1744	1743	1764	1759	0,8
line c	1728	1732	1751	1779	1743	1765	1738	1720	1705	1728	1710	1697	1733	1,4
line d	1745	1729	1762	1740	1715	1730	1751	1730	1709	1736	1690	1696	1728	1,3
line e	1701	1688	1732	1751	1738	1738	1739	1734	1693	1721	1711	1678	1719	1,4
line f	1778	1786	1775	1775	1766	1757	1786	1787	1770	1775	1757	1785	1775	0,6
line g	1696	1753	1756	1684	1698	1680	1726	1711	1676	1710	1665	1700	1705	1,7
line h	1733	1733	1701	1709	1675	1613	1685	1694	1653	1709	1643	1754	1692	2,4
mean	1724	1737	1741	1736	1720	1714	1731	1723	1699	1717	1695	1720	<b>1722</b>	
cv %	2,2	2,0	1,7	2,1	1,9	3,6	2,4	2,7	2,6	2,7	2,5	2,4		<b>2,4</b>



### 11.5. Linearity

In order to assess the dose-response relationship of the test, positive sera were measured in serial 2-fold dilution. Acceptance criterion: linear regression of 4 successive dilutions must yield a correlation factor > 0,98. A typical result is depicted below.



0212FE00.FED/LinearV2012J

### 11.6. Precision

For the assessment of the test precision, the variability of results under the following conditions was determined: a. within 1 assay and between 3 assays, b. between 3 operators and c. between 2 kit lots.

a. Intra- and inter-assay variability (n = 24 and 72, respectively)

sample	mean U/mL	variability (cv, %)	
		intra-assay	inter-assay
1	15,1	1,2	1,5
2	42,1	1,6	2,0
3	64,6	2,9	3,0

## b. Operator to operator variability (n = 12)

sample	mean U/mL	variability (cv, %)
1	15,6	2,7
2	42,2	3,3
3	73,5	5,5

## c. Variability between 2 kit lots (n = 6)

sample	mean U/mL	variability (cv, %)
1	15,3	2,8
2	41,7	5,9
3	72,1	3,5

**11.7. Frequency distribution of H. pylori IgA**

This was analysed in a sera collective of blood donors, equally distributed by sex and age, and a collective of sera found positive according to a CE-compliant reference ELISA. The following distribution of the analyte was observed:

**blood donor sera**

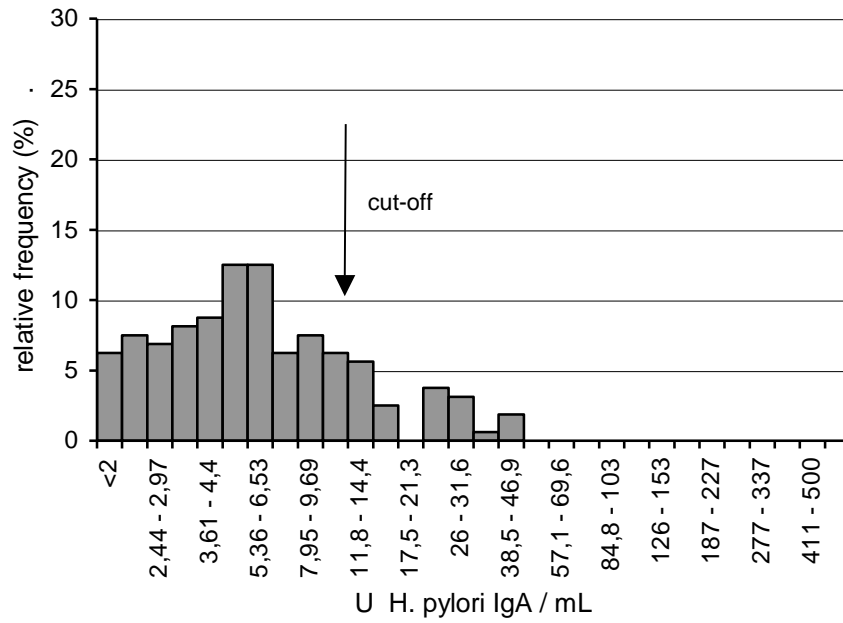
n: 160  
 mean: 8,0 U/mL  
 mean + s: 15,9 U/mL  
 mean + 2s: 23,8 U/mL  
 median: 5,4 U/mL  
 95<sup>th</sup> percentile: 26,0 U/mL

**positive sera**

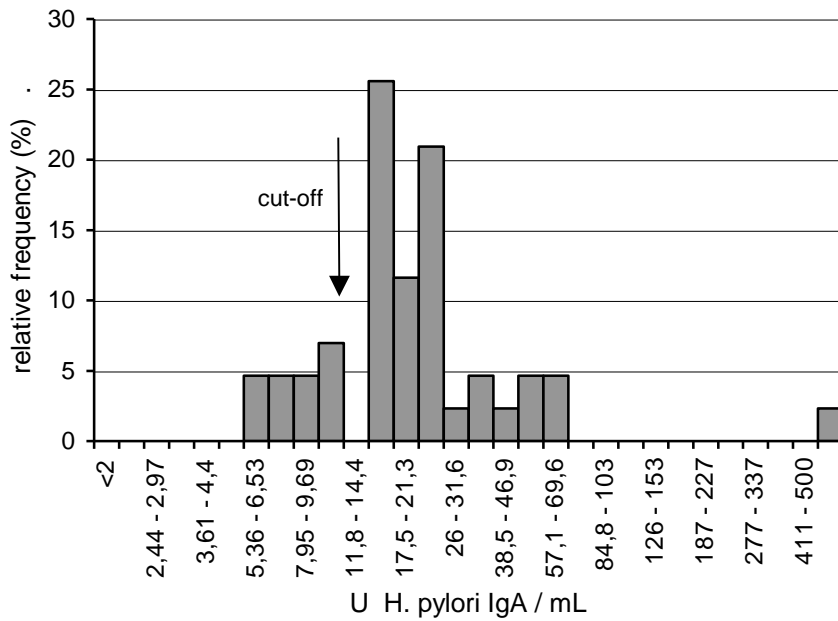
n: 43  
 mean: 34,2 U/mL  
 mean - s: < 0 U/mL  
 mean - 2s: < 0 U/mL  
 median: 18,4 U/mL  
 5<sup>th</sup> percentile: 7,0 U/mL

ROC-analysis of these data was used to determine the cut-off as 11,0 U/mL (6). Based on this definition, the data presented here suggest a diagnostic specificity and sensitivity of the ELISA of about 79 and 81 %, respectively. These values apply for the measured sera only; other collectives may yield different results.

**blood donor sera**



**positive sera**



0212FE00.FED/HäufigPlotV2012J

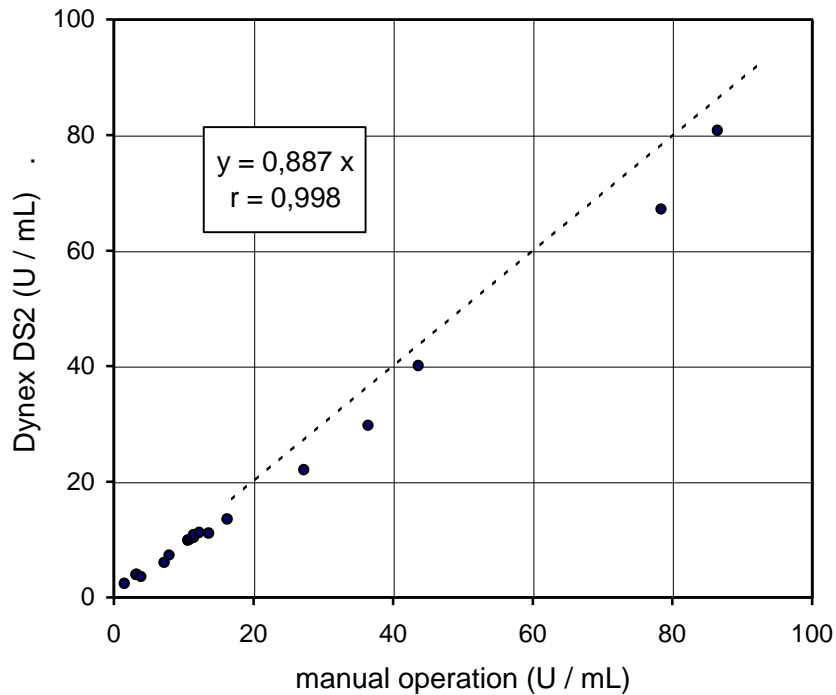
### 11.8. Manual operation vs. Dynex DS2 automated ELISA system

Variability: Using specimen of one and the same kit lot, the variability of assay results were compared between manual operation and the Dynex DS2 automated ELISA system:

	manual operation	Dynex DS2
intra-assay variability (n = 16)	mean cv = 3,0 %	mean cv = 3,5 %
inter-assay variability (n = 48)	mean cv = 4,3 %	mean cv = 3,9 %

Standard curve: depicted in section 9

Correlation:



0212FE00.FED/Korr/DynexDS2-V2012J



## 12. Declaration

Steffens Biotechnische Analysen GmbH (SBA) guarantees that the product delivered has been thoroughly tested to ensure that its properties specified herein are fulfilled. No further warranties are given.

The performance data presented here were obtained using the procedure indicated. Any modification in the procedure may affect the results in which case SBA disclaims all warranties whether expressed, implied or statutory. Moreover, SBA accepts no liability for any damage, whether direct, indirect or consequential, which results from inappropriate use or storage of the product.

## 13. Symbols



Catalogue number



Batch code



Unique Device Identification



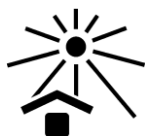
Contains sufficient for <n> tests



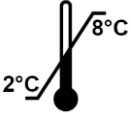
In Vitro diagnostic medical device



Conformité Européenne



Keep away from sunlight



Store at 2 - 8°C



Use-by Date



Consult "Instructions for Use"



Caution



Biological risk



Manufacturer



Distributor

## 14. References

1. Dunn, B. E., et al.: Helicobacter pylori. Clin Microbiol Rev 10 (1997), 720 - 741
2. Mitchell, H. M.: The epidemiology of Helicobacter pylori. Curr Topics Microbiol Immunol 241 (1999), 12 - 30
3. Asaka, M., et al.: Long-term Helicobacter infection - from gastritis to gastric cancer. Aliment Pharmacol Therapeutics 12 (1998), 9 - 15
4. Azuma, T., et al.: Review: Diagnosis of Helicobacter infection. J Gastroenterol Hepatol 11 (1996), 662 - 669
5. Ricci, C., Holton, J., Vaira, D.: Diagnosis of Helicobacter pylori: invasive and non-invasive tests. Best Pract Res Clin Gastroenterol. 21-2 (2007), 299 - 313
6. Sommer, R., and Eitelberger, F.: Wertigkeit der Gliadin-Antikörper im Serum zur Diagnose der Zöliakie. Wien Klin Wochenschr 104/4 (1992), 86 - 92

## 15. Summary flow chart

- a. Dilute the samples 1/100 in sample buffer (100 mL, ready-to-use, orange) and mix.
- b. Dilute the wash buffer 10x-concentrate (100 mL, blue) with water and mix.
- c. Wash the wells once with 350  $\mu$ L wash buffer each. Dispense 100  $\mu$ L of the calibrators (2,0 mL each, ready-to-use, gradually blue) and controls (2,0 mL each, ready-to-use, green and red) and of the diluted samples into the wells of the solid phase. Duplicate measurements are recommended. Incubate for 30 minutes at room temperature ( $23 \pm 3^{\circ}\text{C}$ ).
- d. Wash the wells 4 times with 350  $\mu$ L wash buffer each.
- e. Dispense 100  $\mu$ L of the conjugate (14 mL, ready-to-use, yellow) into the wells. Incubate as in step c.
- f. Repeat washing step d.
- g. Dispense 100  $\mu$ L of the substrate solution (14 mL, ready-to-use, black vial) per well. Incubate as in step c. Then, add 100  $\mu$ L stop solution (14 mL, ready-to-use, colourless) per well and agitate the plate briefly.
- h. Immediately measure the absorbance at 450 nm.
- i. Quantitative evaluation: determine the standard curve and, using this curve, transform the absorbance of the samples into their respective antibody concentration (U/mL).
- j. Qualitative evaluation: determine the borderline absorbance by multiplying the absorbance of the positive control with the factor shown in the certificate of analysis. Then, calculate the ratio of the samples by dividing their absorbance by the borderline absorbance.